

Monitoring, Alarm & Control Stations



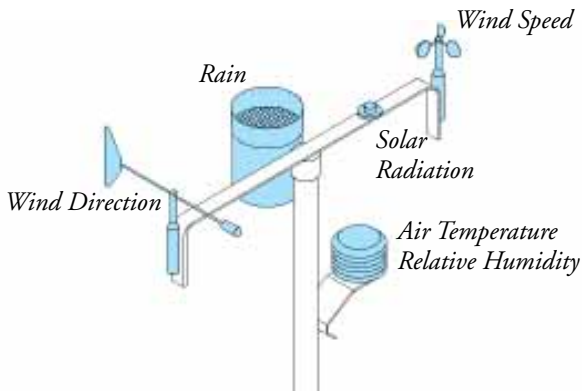
# MEASURETEK



*Making Technology Easier...*

# SENSORS

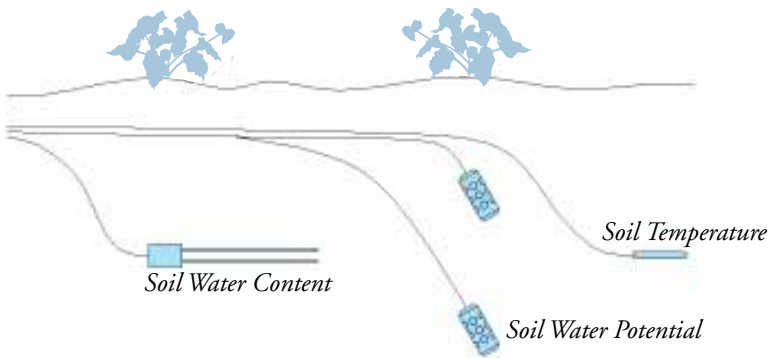
## WEATHER



### Learn about:

- Crop water use (evapotranspiration)
- Growing degree days
- Frost/heat damage
- Fungi and disease susceptibility

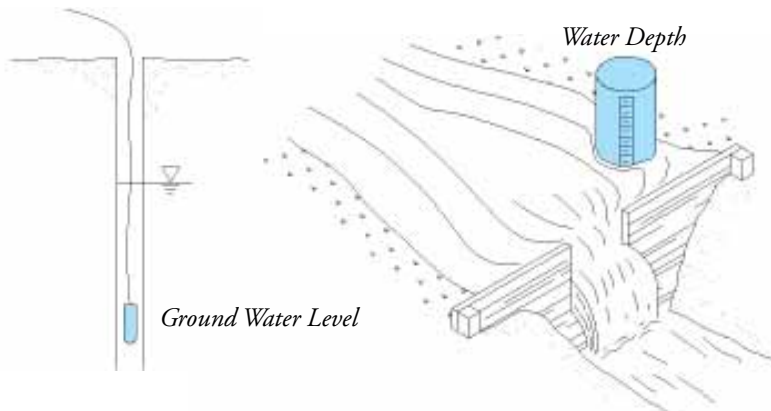
## SOIL



### Learn about:

- Soil moisture
- Wetting fronts
- Irrigation effectiveness
- Biological activity

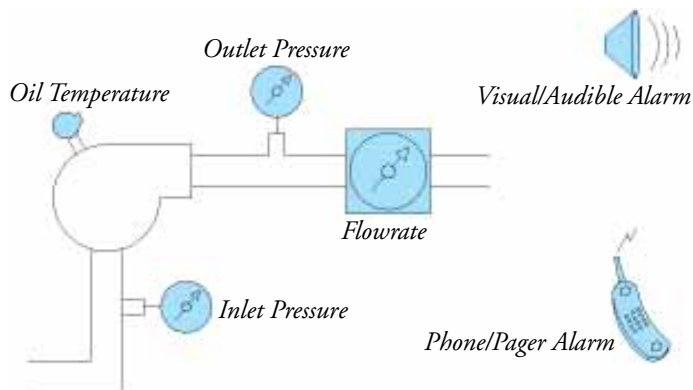
## WATER LEVEL



### Learn about:

- Water table fluctuations
- Canal/stream depth and discharge

## INDUSTRIAL



### Learn about:

- Flowrate and cumulative flow
- Pressure fluctuations
- Temperature extremes
- Movement and tilt

STATIONS	Measure & Record	Control
MINI	1–4 parameters	1–2 devices
BASIC	1–12 parameters	1–48 devices
LARGE	1–32 parameters	1–48 devices

## POWER SUPPLY OPTIONS

All stations are powered by 12 volts.

- Alkaline Battery Pack, 12 volts.
- AC Power Adapter with backup 12V battery.
- Solar Power with backup 12V battery.
- User supplied 12V Marine Lead Acid Battery.

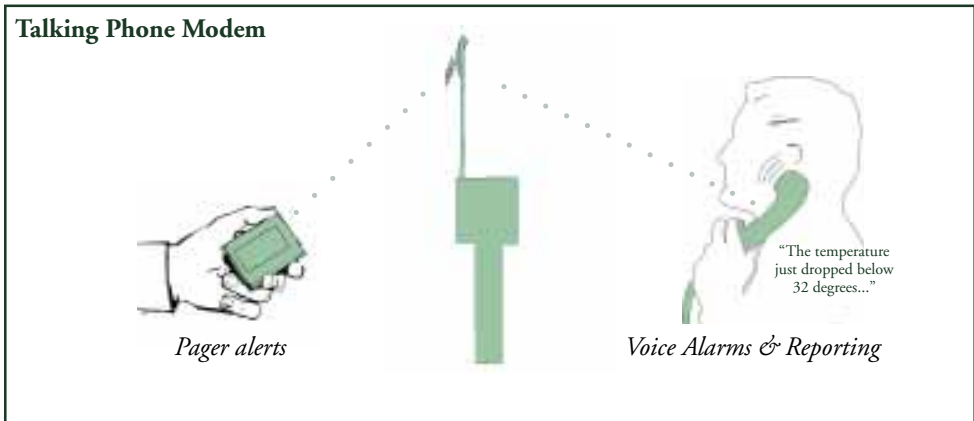
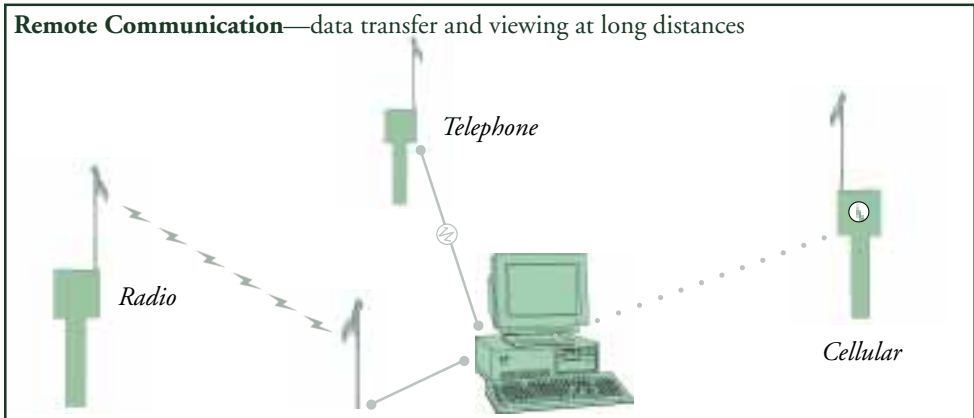
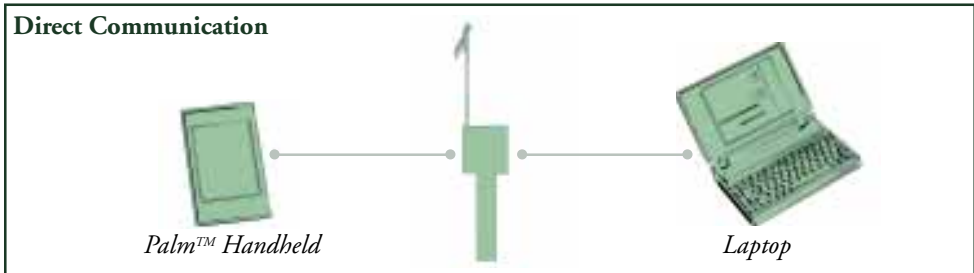
## MOUNTING OPTIONS

All stations are contained in weather resistant steel boxes (12"×12"×7", approximately 25 lbs.) which can be mounted on any vertical 1 1/2" pipe, or attached to a flat wall or siding.

- Portable field stand, for portability and support in the field.
- User supplied vertical pipe or flat wall; grounding rod required.

## DATA COMMUNICATION OPTIONS

Each station will display and transfer data to either a computer or another station.



## FEATURES

**Data Storage**  
Each station has its own memory and data storage capacity. This eliminates the need for continuous communication and automatically provides for a data backup.

**Data Processing**  
Each station performs its own data processing, eliminating the need and expense of storing and processing large amounts of data to get accurate information.

**Variable Recording Interval**  
Data are measured once every minute. Daily and hourly data storage is standard. (Optionally, 15-minute data are also stored.)

**Processor Accuracy and Resolution**  
Processor is accurate to +/- 0.1%, with 12-bit resolution.

- Control Capabilities**
- PC scheduling software available
  - 1–8 port off/on control standard (0/5V)
  - 1–4 port relay control available
  - 16 station 24 VAC controller available

**Reliability & Warranty**  
The stations are designed for long term reliability, and are backed with a 3 year limited warranty.

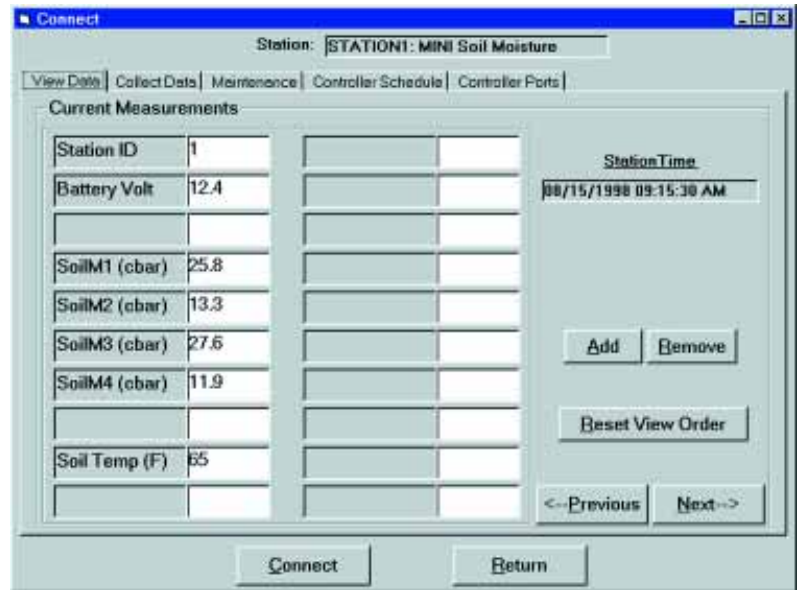
# SOFTWARE

## CONNECT

### Retrieve and view real-time data

Use CONNECT to view current sensor measurements and for transferring data from the stations to a computer.

- CONNECT Software for direct (laptop) communication.
- CONNECT+ Software for phone/remote station communication.
- CONNECT++ Software for communication and control scheduling.



## RESULTX™

### Interpret, process and report data

Use RESULTX™ to store, retrieve, and interpret collected data in graphical and report form.

- RESULTX™ Lite for standard use.
- RESULTX™ for incorporating field, soil, and crop data into your reports.



View Trends in Soil Potential by Depth or Location.



Track daily and cumulative ET for water use analysis.

Export data from RESULTX software to Excel or another data program.

**MEASURETEK**  
P.O. BOX 1717, CORVALLIS, OREGON 97339  
(541) 757-8564 FAX 753-5754

**WWW.MEASURETEK.COM**