



# MEASURETEK

## **CONTROLX CONTROLLER** *The Smart Controller*

Control based on time, pulsed time, and/or monitored conditions

### **16 OR 32 VALVE/ PUMP STATIONS**

- All valve/pump stations may operate on a different schedule
- Easy field use with individual on/off switch and light
- Standard 24 VAC stations with 300VA capacity



### **REMOTE ACCESS CONTROL**

Monitor and control from anywhere in the world

**PAGER/PHONE  
CALL ALERT WITH  
THE TALKING MODEM**

**PALM™ CONTROLLABLE**

**FROST      IRRIGATION      SUNBURN**

*Making Technology Easier...*

# CONTROLX CONTROLLER *The Smart Controller*

- 16 individually scheduled valve or pump stations
- Control pumps, valves, chemical injection, and alarms
- Control based on time and/or monitored conditions

## Local Control of Your Controller

You're not dependant on commands and communication from a central computer

## MonitorX Monitoring Station

*The Brains of the Monitoring & Control Station*

Measures and stores data such as:

- Weather
- Soil Moisture
- Almost any sensor desired
- Crop Evapotranspiration
- Flow and Pressure

Keeps hourly and daily data logs.

Additional Stations

Communicate with phone, cellular, or radio.



## Connect++

*Communication and Control Software*

- Real-time sensor viewing
- Controller scheduling
- Data collection

## ResultX

*Database and Analysis Software*

- Water applied per field
- Chemicals applied per field
- Weather/ET
- Flow, pressure, soil moisture, temperature, leaf wetness, etc.



In your office, at home, and beyond  
View and control your stations from anywhere in the world.

*Schedule control on a computer . . . and*

# CONTROL SCHEDULES

Control Schedules are the instructions to control all of your valve/pump stations.

Create schedules based on:

- Start/stop dates & times
- Days of the week
- Monitored condition values (soil moisture, temperature, weather/ET, etc.)

Individually schedule 16 valve/pump stations.

Location	Dates	Week	Time	Phase	Start	Monitored	Monitored	Monitored	Time	Conditions
1. Valve #1	6/1-7/1	Daily	00:00-04:00	Cont.					12	
2. Valve #2	6/1-7/1	Daily	04:00-08:00	Cont.					12	
3. Valve #3	6/1-7/1	Daily	08:00-12:00	Cont.					12	
4. Valve #4	6/1-7/1	Daily	12:00-2:00	60/120					12,13	
5. Valve #5	6/1-7/1	Daily	13:00-2:00	60/120					12,13	
6. Valve #6	6/1-7/1	Daily	14:00-2:00	60/120					12,13	
7.										
8.										
9. N Pump										
10. P Pump										
11. K Pump										
12. Water Pump										
13. Booster										
14.										

Automatic System Shutdowns (optional):  
Measurement: None, Comparison: None, Value: , F Automatic Restart:   
 Require Manual Restart

Buttons: Edit Selected Location, Print Schedule, Return

Optional system shutdown based on monitored conditions.

Select dates and times to operate schedule.

Current Location: 1. Valve #1, Load Template: Template

Day/Time Control | Monitored Control

Days of Operation:  
Start Date: 6/1, End Date: 7/1  
 Off,  Daily,  Every Other Day,  Every Third Day,  Custom

Time of Operation:  
Start Time: 00:00, End Time: 04:00, Start Delay: 0  
 Turn Location ON Continuously,  Pulse ON (req), OFF (req),  Monitored Control Only

Slave Locations:  
Slaves to Add: 1. Valve #1, Assigned Slaves: 12. Water Pump (req)

Fertilizer/Chemical Pumps:  
Pumps: [Empty list]  
Buttons: Add, Remove

Buttons: OK, Cancel

Control based on monitored conditions such as ET/weather, soil moisture, temperature, and more.

Add chemical injection.

Assign slave stations to other stations.

Slave stations are usually pumps or boosters that must come on with the selected valve.

An unlimited number of Control Schedules can be created and stored for each controller.

Schedules are sent to the controller via phone, radio, laptop or Palm™ handheld.

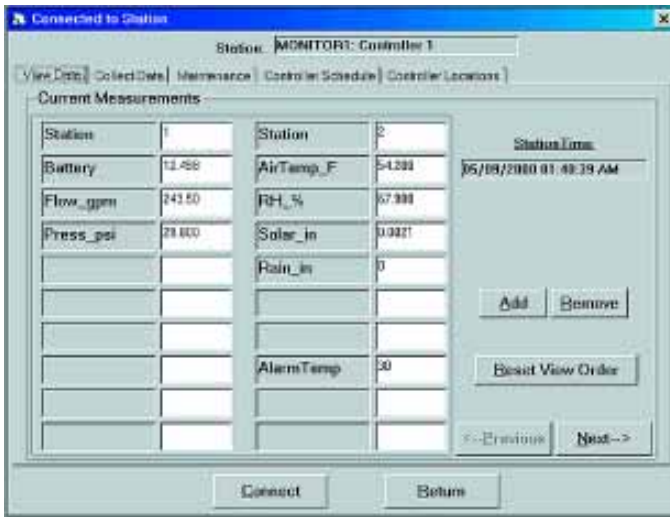
*the schedules are saved for use next year!*

# SOFTWARE

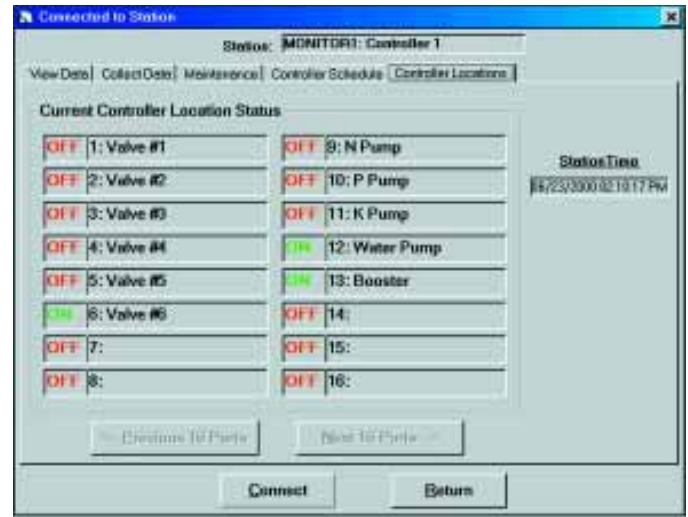
## CONNECT++

Retrieve and view real-time data; create and send controller schedules.

Use CONNECT++ to view current sensor measurements, download data, and create/send controller schedules.



View real-time data and set alarm values.

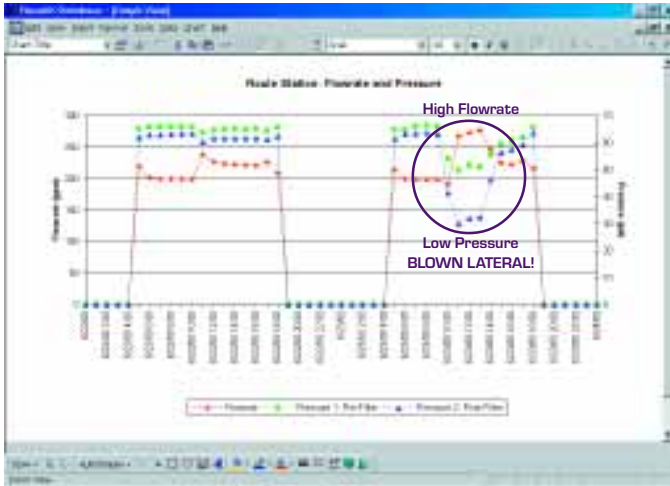


View current valve/pump station status.

## RESULTX™

Organize data by field information to interpret and report water use, chemical application, and sensor data.

Use RESULTX™ to store, retrieve, and interpret collected data in graphical and report form.



Catch field malfunctions at the computer.



Track daily water use.

Export data from RESULTX software to Excel or another data program.

**MEASURETEK**  
P.O. BOX 1717, CORVALLIS, OREGON 97339  
(541) 757-8564 FAX 753-5754

**WWW.MEASURETEK.COM**